

Spirit levels with adjustment and cross-measurement

In digital times, they seem like relics from the past, but spirit levels remain indispensable tools in everyday industrial operations. Two new spirit level types from Elesa+Ganter now offer even better and faster alignment.

It is hardly possible to do without these small tools for adjustment when striving for perfectly horizontal alignment of machines, mechanisms or instruments. And even after the initial setup, spirit levels still come in handy during regular operation to show whether the positioning is still correct. Spirit levels can be used almost anywhere. In addition to needing no power supply or data lines, they are robust, simple to adjust and can be added at any time. Elesa+Ganter has now expanded its existing selection of bull's eye and screw-on spirit levels with two new models – both as practical as ever.

Cross spirit levels GN 2276

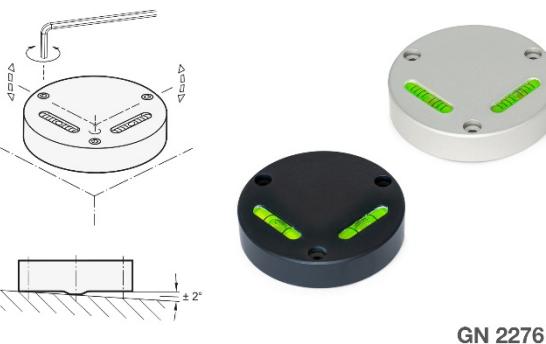
The cross spirit levels GN 2276 combine two perpendicular linear levels within a single, round aluminum housing. This design shows the alignment in two planes at once, making installation and leveling easier and faster. Elesa+Ganter offers two versions: One with a flat underside for direct installation and a second version with an alignment ball on the bottom side for adjustment. The second type, designated "JV," allows the spirit level to be adjusted using the three installation screws to set a zero point adapted to the specific situation with a variance of ± 2 degrees.

Screw-on spirit levels GN 2283

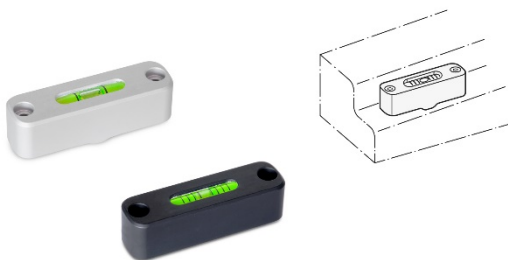
Elesa+Ganter now also offers screw-on spirit levels in a robust aluminum housing. While the existing screw-on spirit levels GN 2282 have been in a deep-drawn, non-adjustable sheet metal housing, the new GN 2283 has the same properties as the right-angle spirit level GN 2276. The new screw-on spirit level is available both as a directly mountable, flat version "AV" and as an adjustable version "JV" with an alignment cam on the bottom. Here as well, the spirit level is adjusted during installation using the two socket cap screws.

Both the new linear and cross spirit levels are available in two sensitivity ratings: 2 millimeters of bubble movement correspond to either 6 or 50 minutes of arc. Elesa+Ganter offers a detailed conversion table to illustrate which sensitivity is best for various applications, making it quick and easy to compare height differences, degrees and minutes of arc.

More information on Elesa+Ganter standard parts can be found in the internet at: [elesa-ganter.com](https://www.elesa-ganter.com)



GN 2276



GN 2283

Contact:

Axel Weber | +49 7723 65 07 22 6 | axel.weber@ganternorm.com

OTTO GANTER GmbH & Co. KG
 Triberger Straße 3 / 78120 Furtwangen | Germany
 +49 7723 65 07 0 | info@ganternorm.com | [ganternorm.com](https://www.ganternorm.com)

[elesa-ganter.com](https://www.elesa-ganter.com)

 **DESIGNED
FOR ENGINEERING**